

# Put A Bid On It!

Silent Auction, April 21-May 7

Take a stroll through this gallery to see pieces that will be auctioned, and plan your visit to see the actual artwork to place your bid. Bidding will take place at the library beginning April 21, 2022. Sculptural pieces will be in the display case, the paintings and prints will be on display in the public meeting room.

Check it out,

**bid high and bid often!**

Bidding will end at 5 PM on May 7. Winning bids will be notified by 7 PM on May 7.

The winning bidders will be notified by phone or email.

(please double check your contact information when bidding)

All proceeds will be used to support the library's mobile computer lab initiative and increase the number of computers available for our patrons.

Thank you to all the local artists and patrons for the donations from their private collections, the auction would not be possible without your kind generosity.

The Solon Library Foundation is a 501(c) 3, all winning bids are tax deductible.

[Next Page](#)



**#1 Reef Ft. Lake, Tennessee**

**photographed by Jeanine Beranek, single mat 20" X 16"**

Jeanine's love of photography started in high school when she took an elective photography class. Her favorite topics were the amazing wonders of Mother Nature: sunsets, sunrises, landscapes, fowl and fauna. This color photograph shows a favorite vacation spot of her family.  
***Suggested starting bid \$60.00***

[Previous Page](#)

[Next Page](#)



**#2 - Cedar County, Summer Sunset**

**photographed by Jeanine Beranek, double mat 20" X 16"**

Jeanine says that her camera is always with her, ready to capture that special moment when it presents itself. She says that the camera helps her look at everyday scenes and creatures with wonder and appreciation.  
***Suggested starting bid \$50.00***



**#3 Summer Fields, Cedar County**

**photographed by Jeanine Beranek, matted 18" X 14"**

The glory of summer in Iowa.

***Suggested starting bid \$35.00***

[Previous Page](#)



**#4 Sunrise, Lake Superior**

**photographed by Jeanine Beranek, double matted 16" X 20"**

Jeanine grew up camping, canoeing and in Girl Scouts. "We always loved the outdoors".

***Suggested starting bid \$50.00***

[Next Page](#)



**#5 Oak Tree, Rochester**

photographed by Jeanine Beranek, matted 21 1/4" X 17 1/4"

Black and white photograph. The oak tree is common through the plains states. It is known for its noble canopy and majestic strength.

***Suggested starting bid \$60.00***

[Previous Page](#)



[Next Page](#)

**#6 Sunrise at Lookout, Pikes Peak State Park**

photographed by Jeanine Beranek, double matted 14 3/4" X 11 3/4"

Pikes Peak State Park is one of the most photographed areas in Iowa with it's beautiful views of the Mississippi River.

***Suggested starting bid \$75.00***



**#7 Spring at Palisades - Kepler State Park**

**photographed by Jeanine Beranek, double matted 16 1/16" X 13"**

This is a beautiful Iowa outdoor destination on the banks of the Cedar River.

***Suggested starting bid \$75.00***

[Previous Page](#)



**#8 Sunrise at Amana 2005**

**photographed by Jeanine Beranek, framed 12 1/2" X 10 3/4"**

Color photograph of Amana, Iowa.

***Suggested starting bid \$50***

[Next Page](#)



**#9 Reel Foot Lake, TN**

**photographed by Jeanine Beranek, framed and double matted 22 1/4" X 18 1/16"**

This black and white photo records a favorite family vacation spot.

***Suggested starting bid \$100.00***

[Previous Page](#)

[Next Page](#)



**#10 Sutliff Bridge**

**photographed by Jeanine Beranek, framed 16 " X 20"**

The day this photo was taken, Jeanine and family had dinner at Sutliff and walked across the bridge. It was in May of 2008, just weeks before the flood washed away a section of this bridge.

***Suggested starting bid \$100***



**#16 A Friend in the Marsh**

**artist Kevin Daniel - framed, double matted, 27 " x 33 1/16"**

Black labradors have been bred for generations as hunting companions. They are known for their friendly, athletic and outgoing personalities.

***Suggested starting bid \$150.00***

[Previous Page](#)



**#17 - See You Next Year**

**artist Terry Doughty, framed, double mat 37 1/2 " X 28 1/2"**

Terry , a nationally known wildlife artist has won over 30 major awards since 1988. He was the first Wisconsin artist to win the Waterfowl, Pheasant and Turkey Stamp designs in the same year. This signed print is a Whitetails Unlimited 25th anniversary edition.

***Suggested starting bid \$200***

[Next Page](#)



**#18 Great Horned Owl**

**artist Patrick Costello, fr double matted 30 " X 26"**

The great horned owl, also known as the tiger owl or the hoot owl is native to the Americas. This aggressive hunter has a large range and can be found in Iowa.

***Suggested starting bid \$200***

[Previous Page](#)



[Next Page](#)

**#19 Horses**

**artist- Lee Leuning - framed, double mat 27 1/2" x 22 1/2"**

Lee Leuning was born in Lake Hendricks, Minnesota and grew up in north Sioux Falls. He attended South Dakota State University in Brookings earning a wildlife biology degree. He worked 28 years as a wildlife officer for Tennessee and later South Dakota. During his wildlife career he developed his artistic talents through watercolor wildlife paintings. Lee also attended Northern State University studying bronze sculpture.

Working with Sherri Treeby on several sculpture projects at Northern State University they formed the art studio, Bad River Artworks. Besides their national market they have placed over 70 public, life-sized sculptures making them one of South Dakota's most prolific bronze sculptors.

***Suggested starting bid \$150.00***



**#20 Ducks**

**artist- Ida A. Gould - framed, 18 ¾" x 22 ¾"**

Ida was born on November 4, 1923 and died March 29, 2011. She was a member of the Creative Artists in Marion and she exhibited her works in numerous art shows.

***Suggested starting bid \$75.00***

[Previous Page](#)



**#26 Bernadette**

**artist - R.C. Gorman - decorative ceramic tile 11 3/4" x 11 3/4"**

R. C. Gorman , a Navajo Indian, primarily draws women. He's been called the "Picasso of American Indian Artists."

***Suggested starting bid \$50.00***

[Next Page](#)



**#27A Mountains of the West**

artist- unknown - framed with double mat, black/cream 12 1/8" X 10 1/4"

Color photograph and collage.

***Suggested starting bid \$40.00***

[Previous Page](#)



**#27B Mountains of the West**

artist- unknown - framed with double mat, black/cream 12 1/8" X 10 1/4"

Color photograph and collage.

***Suggested starting bid \$40.00***

[Next Page](#)



**#28 Southwest Landscape**

**artist unknown - 24" X 48"**

This painting provides a hint of the Southwest where the open skies dominate the mountains in this summer landscape.

***Suggested starting bid \$50.00***

[Previous Page](#)



**#29 Native American**

**artist- Ken Schmidt - framed with double mat, cream 28 3/4" X 36 1/2" , signed, 319 of 900**

This artist, from upstate New York, spent over 25 years creating a signature style with his attention to detail and realism. He worked primarily in watercolor and pencil. This piece was printed in 1986. Ken's work has been featured on the covers of magazines like "Midwest Art", and "Art of the West".

***Suggested starting bid 200.00***

[Next Page](#)



**#30 Native American**

**artist- Ken Schmidt - framed with a double mat, cream 28 3/4" X 36 1/2" , signed, 319 of 900**

This artist, although from upstate New York, had the ability with his detail and realistic style to breathe life into his western themed paintings. This allowed collectors to feel and experience the rugged life that his subjects endured. He focused on portraying the Native American, the mountain man and the cowboy primarily through watercolor and pencil. This piece was reproduced in 1986.

***Suggested starting bid \$200.00***

[Previous Page](#)



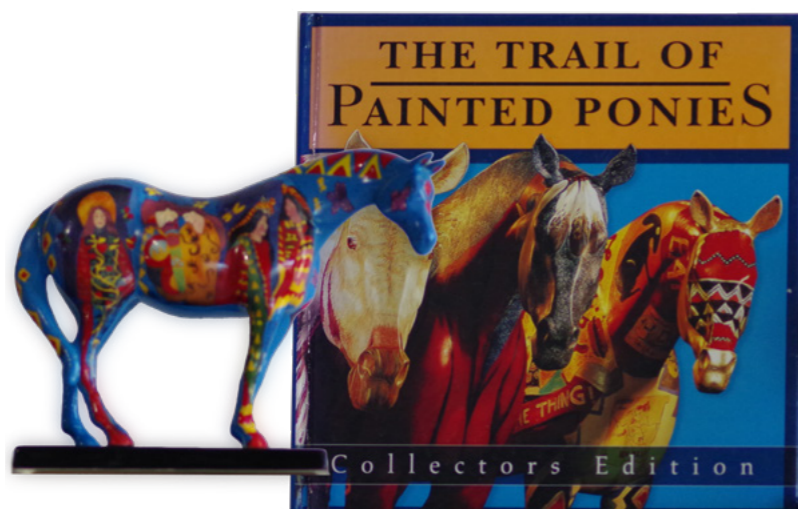
**#33 Flower Boy**

**artist - Ettore DeGrazia - framed with double mat, burgundy/cream 10 3/4" x 13 1/4"**

The son of Italian immigrants, Ettore was born June 14, 1909 in the Morenci mining camp of Territorial Arizona. His early childhood experiences in this ethnically diverse community evolved into a lifelong appreciation of native cultures.

***Suggested starting bid \$25.00***

[Next Page](#)



**#35 The Trail of Painted Ponies “On Common Ground”**

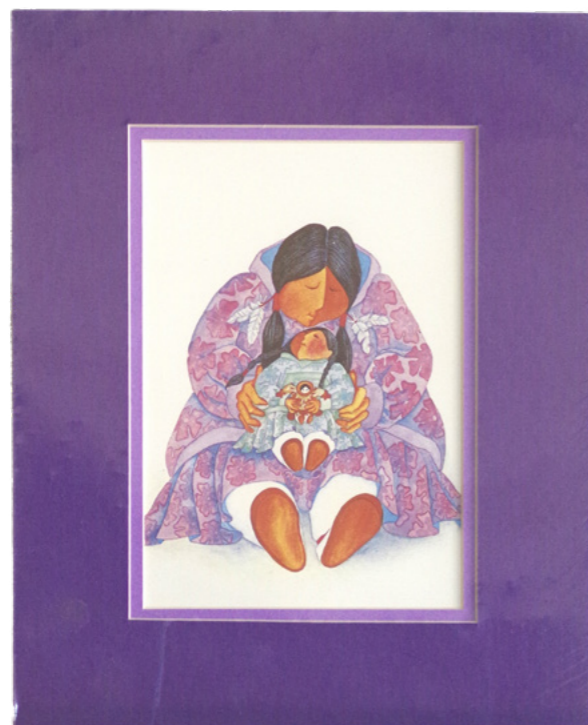
**artist- Patricia Wyatt - ceramic, 6” tall includes box and book.**

The Trail of Painted Ponies was a successful art project originating in Santa Fe, New Mexico. Initially artists were invited to transform life-sized sculptures of horses into original works of art. Collectibles are sold, in miniature, and the proceeds support non-profit organizations. This figurine is now retired.

Patricia Wyatt is a California artist who chose in her decorative art to speak to the timeless themes of companionship and the collective power, wisdom and beauty of women around the world. Lush flowering plants surround the figure with emblems of nature, the world and the earth.

***Suggested starting bid \$100.00***

[Previous Page](#)



[Next Page](#)

**#40 Mama, do you love me?**

**artist- Barbara Lavalley- double mat, lilac/purple 8” X 10 ”**

Lavalley is an Alaskan watercolorist known for her work depicting various cultures. Her illustrations feature unique and often humorous subjects. This illustration is in a children’s picture book of the same name.

***Suggested starting bid \$25.00***



**#41 Tangled Traces**

**artist- Rie Munoz - double mat, burgundy/navy 10" X 8 "**

Munoz moved to Alaska on a whim and never left. While living in Alaska, she worked as a journalist, museum curator, artist and as a teacher of twenty-five Alaskan children on King Island. She is another well known Alaskan artist.

***Suggested starting bid \$25.00***

[Previous Page](#)



**#42 Lovebirds**

**artist - Israel Shotridge - double matt,black/burgundy 12" X 10 "**

Israel Shotridge was born in 1951, raised in Ketchikan, Alaska. He is a member of the Teikweidee (Bear) clan of the Taantakwan (Tongass Tribe). Israel strives to perpetuate the Tlingit culture & art by teaching and carving monumental masterpieces. His totem poles, canoes, carved panels, masks, ceremonial objects and engraved jewelry are all sought after by collectors.

The "Lovebird" is a popular symbol. It represents the union of the Eagle and the Raven as one. Sticking with tradition, a tribal member who was an Eagle would choose to marry a member of the opposite clan, that of the Raven.

***Suggested starting bid \$25.00***

[Next Page](#)



**#50 Japanese Cranes**

**artist - unknown - framed, double matted, camel/cream 11 1/2" X 11 1/2"**

In Japan, the crane is one of the mystical or holy creatures that symbolize good fortune and longevity because of its fabled life span of a thousand years. The crane is a favorite subject of Haiku poetry and the tradition of origami or paper folding.

***Suggested starting bid \$50.00***

[Previous Page](#)



**#55 Golf (Missed)**

**artist- Norman Rockwell - framed, double mat, navy/white 12 1/4" X 15"**

This print is part of a "Four Seasons" series and first appeared on a Brown & Bigelow calendar in 1951. Rockwell once said that the paintings he did for this series were "the most satisfying of the many that I have done over the years".

***Suggested starting bid \$25.00***

[Next Page](#)



**#56 First Down**

**artist- Norman Rockwell - framed, double mat, navy/white 12 1/4" X 15"**

This print is part of a "Four Seasons" series, and first appeared on a Brown & Bigelow calendar in 1951. Rockwell had the knack of capturing the warmth of people, of all ages, involved in their daily lives.

***Suggested starting bid \$25.00***

[Previous Page](#)



[Next Page](#)

**#60 Field of Fireweed**

**artist - unknown- double mat burgundy/cream 10" x 8"**

Fireweed is a tall showy wildflower. The name fireweed stems from its ability to colonize areas burned by fires quickly. It was one of the first plants to appear after the eruption of Mt. St. Helens in 1980.

***Suggested starting bid \$25.00***



**#61 Dragon Vase**

unknown artist, lithograph 11 1/4 " X 13 1/16"

Flowers with an Asian touch. Elaborate matting and delicate gold frame.

***Suggested starting bid \$75.00***

[Previous Page](#)



**#62 Snapdragons**

photographer - Woody Woodson - framed double mat 22 1/2" x 26 1/2"

This is a vibrant photograph of a common Iowa garden flower. Antirrhinum is a genus of plants commonly known as dragon flowers or snapdragons because of the flowers' fancied resemblance to the face of a dragon that opens and closes its mouth when laterally squeezed. They are native to rocky areas of Europe, the United States, Canada, and North Africa.

Woody was an employee at Rockwell Collins.

***Suggested starting bid \$50.00***

[Next Page](#)



**#63 Hand pump in water color**

**artist - Betsy Saupe - framed with double matt, 23 1/4" X 18 1/4"**

Betsy Saupe, a Solon resident, uses her watercolors to remind us of the treasures we have in our Iowa landscapes.

***Suggested starting bid \$100.00***

[Previous Page](#)



**#70 Abstract watercolor**

**artist unknown - framed with matt 12 1/4" X 17 1/4"**

This vibrant watercolor would add a bright accent to any wall.

***Suggested starting bid \$35.00***

[Next Page](#)



**#71 Pink Fused Glass**

**artist- Bob Schneider - framed double mat, cream 7 ¼" X 14 ½"**

Bob enjoys working with dichroic glass. Dichroic is a type of glass that absorbs one wavelength of light and reflects another. It stands out in both stained and fused projects.

***Suggested starting bid \$40.00***

[Previous Page](#)

[Next Page](#)



**#72 Green Fused Glass**

**artist- Bob Schneider - framed with double mat, cream 7" X 9"**

Bob Schneider, a Solon resident, is a retired faculty member in the Department of Prosthodontics and Hospital Dentistry. He started in stained glass over 30 years ago and in the last 15 years became interested in fused glass. Many of the same principles of dental ceramics are used in glass fusing.

***Suggested starting bid \$40.00***



**#73 Glass Art**

**local artist - 12" X 12"**

Bright primary colors are featured in this glass art. It can be used as window art, an accent piece on any wall or as a trivet.

***Suggested starting bid \$30.00***

[Previous Page](#)



[Next Page](#)

**#74 Tarahumara pottery**

**artist, unknown - clay with leather 6" x 5 3/4"**

The Tarahumara Indians are located in the Sierra Madre mountains of northern Mexico. Their pottery style is utilitarian and represents a craft that Native potters have made for centuries. Created by the pinch and coil method, Tarahumara Indian pots are made by hand without a wheel. The vase is formed by hand coiling clay for the shape of the vessel, then burnished with a piece of smooth wood or stone.

***Suggested starting bid \$50.00***



**#75 Vase with blue accents**

**artist - the name "Lillian" was on the base, 7 1/2" x 7"**

This ceramic vase has many textures. The blue accent colors set off the variety of brown and umber colors.

***Suggested starting bid \$40.00***

[Previous Page](#)



**#76 Olive bowl with peony**

**artist - unknown, 9" x 4"**

This delicate bowl is a piece of art in itself so it could have a place of honor on your shelf or table. It could also be used to hold the important items that we must keep track of in our daily lives.

***Suggested starting bid \$30.00***

[Next Page](#)



**#77 Blue vase**

**artist - unknown, 4 1/2" x 7 3/4"**

This vase features a mottled blue glaze that provides a subtle contrast to any flowers that it may hold.

***Suggested starting bid \$30.00***

[Previous Page](#)



**#78 Ceramic Teapot**

**artist - unknown, 7 1/4" x 9 3/4"**

A piece of art or an elegant vessel for your tea.

***Suggested starting bid \$30.00***

[Next Page](#)



**#78 Ceramic Pocket**

**artist - unknown, 7 3/4" x 6 "**

This ceramic pocket would make a charming wall accent with dried flowers or the touch of green with an air plant.

***Suggested starting bid \$25.00***

[Previous Page](#)



**#80 Amish School Children**

**artist - Al Koenig- framed with double matt (missing dimensions)**

This charming print was produced in 1992 and signed by the artist.

***Suggested starting bid \$40.00***

[Next Page](#)



**#81 Solon Bank on Main St.**

**artist - Millie Gilbaugh - framed 24 ¼" X 20 ¼"**

Writer and artist, Millie Gilbaugh, created this painting in 1978. Several years ago, Millie participated in the "Picture Presenters", a group of volunteers who brought paintings into the elementary classrooms at Lakeview, to introduce children to various artists. She also did much of the writing for the Solon History book that is available at the Solon Library. You can enjoy Millie's columns in the weekly Solon Economist.

***Suggested starting bid \$50.00***

[Previous Page](#)



**#83 Johnson County, Iowa farm**

**artist - Stan Haring, framed 17 ¼" x 13 ¼"**

A charming illustration of a Johnson County family farm in the Iowa countryside.

***Suggested starting bid \$25.00***

[Next Page](#)



**#84 Herbert Hoover Birthplace , West Branch**

**artist - Stan Haring, framed 17 ¼" x 13 ¼"**

This is one of four prints that were made available through Eagles stores several years ago. Eagles stores closed their operations in our area in 2003.

***Suggested starting bid \$25.00***

[Previous Page](#)



**#84 Iowa City Train Depot**

**artist - Stan Haring, framed 17 ¼" x 13 ¼"**

The Chicago, Rock Island and Pacific Railroad Passenger station is a historic building. Built in 1898 for passenger use, it was the second depot built in Iowa City. The depot closed in 1970. In 1982, the depot was acquired by a couple of attorneys for their offices.

***Suggested starting bid \$25.00***

[Next Page](#)



**#86 The Amanas**

**artist - Stan Haring, fr 17 1/4" x 13 1/4"**

The Amana Colonies are seven villages on 26,000 acres located in Iowa County, Iowa. The villages were founded by German immigrants in 1855. Collectively, they are named a National Historic Landmark.

***Suggested starting bid \$25.00***

[Previous Page](#)



**#90 "Grisaille Mandolin"**

**artist - unknown - framed with double mat 25" X 25"**

The mandolin can be found in many fine art paintings in both Europe and America.

Grisaille is a type of painting executed entirely in shades of grey or of another neutral greyish colour. The technique is used to imitate sculpture. Many grisailles include a slightly wider colour range.

***Suggested starting bid \$40.00***

[Next Page](#)



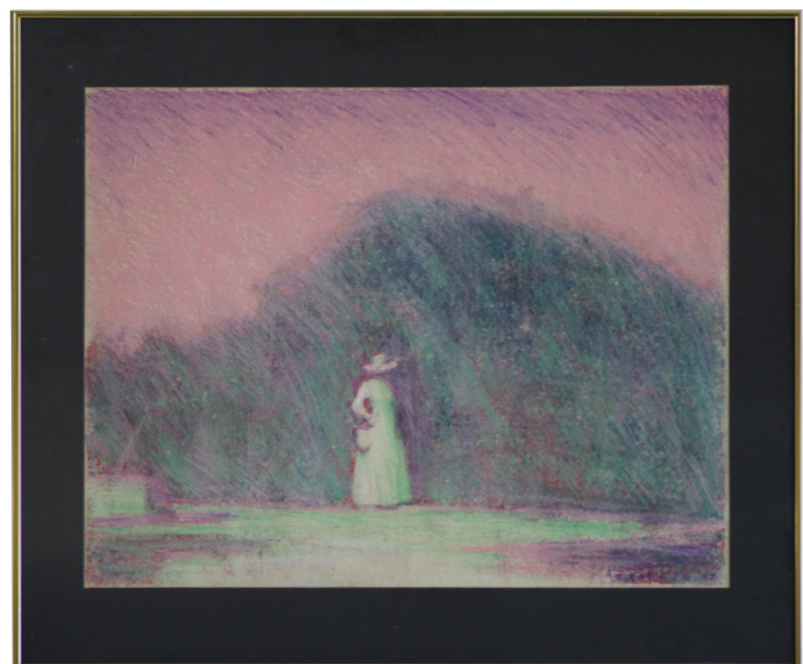
**# 92 Starry Night**

**artist - Vincent Van Gogh - framed, double mat cream/navy 22" x 18"**

This print is a copy of a painting that Van Gogh created in June of 1889. It depicts the view from the east facing window of his room in the asylum at St. Remy-de-Provence, just before sunrise, with the addition of an imaginary village. Van Gogh spent 12 months there seeking a reprieve from his mental illness.

***Suggested starting bid \$50.00***

[Previous Page](#)



**#93 Girl at sunset**

**artist- T. Rathje, 1997 - framed 26 1/4 " X 22 1/4"**

An impressionistic study of early evening light in chalk.

***Suggested starting bid \$40.00***

[Next Page](#)



**#94 St. John D'Abernoun**

**artist- unknown - double mat, gold/black 12 1/2" X 25 □"**

This is a print of one of the earliest surviving brass rubbings in England. The original is over 6 feet high. St. John wears chainmail with a linen surcoat with genouilleres to protect his knees. He carries a lance and shield bearing his coat of arms. Westminster Abby.

***Suggested starting bid \$60.00***

[Previous Page](#)

[Next Page](#)



**#95 "Gary" Small boy reading in rocking chair**

**artist - Jim Ingwersen - framed 20 1/2" X 24 1/2"**

Jim Ingwersen is a nationally known portrait artist from Door County, Michigan. Norbert Blei, an author and friend of Ingwersen's said, "He captures people. He holds them dearly in his hand, his mind's eye, his whole being while slowly rendering them into art. He captures faces, feelings, gestures... a moment in a person's life, and holds it there, skillfully in line, in composition, in color, giving it a permanence, a reality of unquestionable beauty."

There is a small scratch on the frame.

***Suggested starting bid \$25.00***



**#96 Lake McBride Landscape**

**artist - Susan Junge , framed 26 3/4" X 20 1/2"**

Susan, a Solon resident, enjoys featuring local areas of interest in her paintings.

***Suggested starting bid \$40.00***

[Previous Page](#)



**#97 Grant Wood "New Road"**

**artist - Grant Wood - framed with double matt, 22 1/2" X 21"**

"New Road" belongs to the National Gallery of Art in Washington, D.C. It was gifted to them by Mr. and Mrs. Irwin Strasburger in 1982. The painting is one of only two Grant Wood works owned by the National Gallery. Permission was granted to the Friends of the Solon Library, to reproduce this painting for fund-raising purposes. The oil painting, created in 1939, depicts a pastoral scene about five miles west of Solon. In the foreground is a simple wooden marker which reads "SOLON 5 MI".

***Suggested starting bid \$150.00***

[Next Page](#)



**#97 Grant Wood “Fall Plowing”**

**artist - Grant Wood - framed with double mat, 25” X 21”**

Fall Plowing is a 1931 oil painting by Grant Wood depicting a plowed field in his home state of Iowa. It pays homage to the recently developed walking plough and steel plowshare commonly used by farmers in the Midwestern United States during this time.

***Suggested starting bid \$150.00***

[Previous Page](#)

[Next Page](#)

## You won!

Bidding will conclude at 5 PM on May 7. Winning bids will be notified by 7 PM on May 7.

Your piece(s) needs to be picked up at the Library on Sunday May 8, between 1-5 PM

or

Monday May 9, between 10AM - 5 PM

If you cannot pick up your auction piece(s) during these times special arrangements can be made.

Only cash and checks will be accepted.

Thank you for your support.

[Previous Page](#)